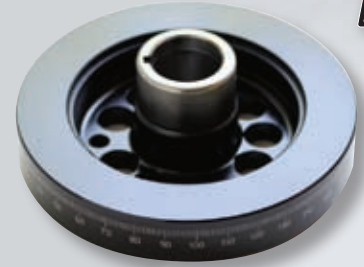


# ENGINE PRO PERFORMANCE HARMONIC BALANCERS



STREET PERFORMANCE BALANCERS are the perfect choice for race classes that require an O.E. type balancer. They are also an economical choice for high powered street engines. SFI RACE SERIES BALANCERS bring the advantage of bonded balancers to high revving race and street/race applications where an SFI approved balancer is required. The steel inertia ring positively protects against forward and backward movement of ten times the force of O.E. non-bonded balancers.



APPLICATION	OUTSIDE DIAMETER	OVERALL DEPTH	RING WIDTH	BALANCE	STREET PERFORMANCE SERIES	SFI RACE SERIES
					STREET PART # WEIGHT (lbs)	RACE PART # WEIGHT (lbs)
<b>CHEVROLET</b>						
283,307 CID 6 1/4" STREET STOCK SPEEDWAY LIGHT WEIGHT					PB1012-ST 4.55	PB1012-SS 5.8
283 - 350 SMALL BLOCK V-8 7"	6.1	2.32	1.34	NEUTRAL	PB2221-ST 7.9	PB2221-SS 8.1
283 - 350 SMALL BLOCK V-8 8"	6.75	2.36	1.32	NEUTRAL	PB1046-ST 10.4	PB1046-SS 11.2
400 SMALL BLOCK V-8 8"	8	2.33	1.6	NEUTRAL	PB1050-ST 7.9	PB1050-SS 10.7
400 SMALL BLOCK V-8 7" LIGHT WEIGHT	8	2.33	1.6	C/W RING		PB1118-SS
427 BIG BLOCK V-8 8"					PB1211-ST 13.2	PB1211-SS 15.4
454 BIG BLOCK V-8 8"	8	2.68	1.95	NEUTRAL	PB1018-ST 15.1	PB1018-SS 16.8
454 BIG BLOCK LIGHT WEIGHT NEUTRAL BALANCE	8	2.68	1.95	C/W HUB	PB1019-ST 8.9	PB1019-SS 9.7
350 (5.7L) SMALL BLOCK LT1 1993-97 CRANK FLANGE MOUNT SERP. BELT	7.1	2.68	1.42	NEUTRAL		PB1481-SS 8.37
<b>350 LT1 SMALL BLOCK 10% UNDER DRIVE SERPENTINE BELT</b>	<b>6.75</b>	<b>N/A</b>	<b>1.28</b>	<b>NEUTRAL</b>		<b>PBU1481-SS10 8.37</b>
350 LT1 STEEL CRANK FLANGE (SHORT STYLE) SUIT F BODY 93-95, CORVETTE 92-95 LENGTH 3.516 USE WITH PB1481-SS, PBU1481-SS AND PB81481-SS						FHS1481-SS
350 LT1 STEEL CRANK FLANGE (SHORT STYLE) SUIT F BODY CAPRICE & IMPALA 93-95 REPLACES OEM 10168570 LENGTH 4.09 USE WITH PB1481-SS, PBU1481-SS AND PB81481-SS						FHL1481-SS
LS1 GENERATION 3 ALL ALLOY 5.7L V-8 (CAMARO&FIREBIRD) SERP. BELT						PB1480-SS 11.2
LS1 5.7L V-8 SERP BELT 10% UNDER DRIVE 6.81" OD	7.5	3.66	2.22	NEUTRAL		PBU1480-SS10 10.9
LS1 5.7L V-8 SERP BELT 25% UNDER DRIVE 6.81" OD	6.81	3.66	2.2	NEUTRAL		PBU1480-SS25 10.7
LS6 5.7L, LS2 6.0L, LS3 6.2L V-8 SERP BELT CORVETTE, SSR	6.81	3.86	2.48	NEUTRAL		PB1117-SS 8.55
LS6 5.7L, LS2 6.0L, LS3 6.2L V-8 SERP BELT CORVETTE, SSR, 10% UNDERDRIVE	7.5	2.83	2.42	NEUTRAL		PBU1117-SS10 7.61
	6.75	2.83	2.42	NEUTRAL		
<b>CHRYSLER</b>						
CHRYSLER 318 340 SMALL BLOCK						PB1004-SS 9.4
360 V-8 C/W	7.11	2.56	1.2	NEUTRAL	PB1108-ST 7.7	PB1108-SS 9.4
392 BIG BLOCK HEMI	7.26	2.56	1.2	C/W RING	PB1115-ST 7.7	PB1115-SS 9.1
440 BIG BLOCK	7.08	2.49	1.1	NEUTRAL		PB1112-SS 9.4
	7.24	2.56	1.2	NEUTRAL		



# ENGINE PRO PERFORMANCE HARMONIC BALANCERS *Continued*

APPLICATION	OUTSIDE DIAMETER	OVERALL DEPTH	RING WIDTH	BALANCE	STREET PERFORMANCE SERIES	SFI RACE SERIES
					STREET PART # WEIGHT (lbs)	RACE PART # WEIGHT (lbs)
<b>FORD V-8</b>						
302, 351 CLEVELAND V-8	6.5	3.5	1.39	C/W HUB	PB1082-ST 9.3	PB1082-SS 10.9
289, 302 WINDSOR V-8 3 BOLT (COUNTERSUNK PULLEY LOCATION)	6.33	3	0.77	C/W HUB	PB1008-ST 6.6	
302, 351 V-8 WINDSOR V-8 3 BOLT (RAISED PULLEY LOCATION) 28OZ. IN.	6.5	3.18	1.39	C/W HUB	PB1203-ST 9.2	PB1203-SS 10.9
302, 351 WINDSOR V-8 3 BOLT (COUNTERSUNK PULLEY LOCATION) 28OZ. IN.	6.5	3.18	1.39	C/W HUB	PB1009-ST 9.1	PB1009-SS 10.9
302, 351 WINDSOR V-8 4 BOLT (RAISED PULLEY LOCATION) 28OZ. IN.	6.5	4.09	1.25	C/W HUB	PB1060-ST 10.1	PB1060-SS 11.4
302 WINDSOR V-8 EFI V-8 4 BOLT 50OZ. IN.	6.4	4.13	1.57	C/W HUB	PB1084-ST 9.1	PB1084-SS 10.9
302 WINDSOR V-8 4 BOLT HUB COUNTER WEIGHT RING	6.4	4.13	1.57	C/W RING	PB1070-ST 9.1	
5.0L EFI WINDSOR V-8 WITH FACTORY CRANK TRIGGER (AU FALCON)	6.38	4.05	1.48	C/W RING	PB1463-ST 9.6	
5.8L EFI WINDSOR V-8 4 BOLT	6.4	4.08	1.2	C/W RING	PB1214-ST 9.2	
WINDSOR V-8 SMALL BLOCK 6" STOCK SPEEDWAY LIGHTWEIGHT 3 BOLT	5.9	3.1	1.26	NEUTRAL		PB1479-SS 5.9
302, 351 WINDSOR V-8 NEUTRAL BALANCE LIGHTWEIGHT 4 BOLT	6.37	4.13	1.57	NEUTRAL		PB1086-SS 8
390 BIG BLOCK FE V-8 INTERNAL BALANCE	7	1.574	1.102	NEUTRAL	PB1111-ST 7.7	PB1111-SS 8.9
460 BIG BLOCK V-8 INTERNAL BALANCE <i>NOTE: THE PB1210-SS CAN BE USED ON EXTERNALLY BALANCED 460 WITH FACTORY WINGED COUNTERWEIGHT</i>	6.62	1.62	1.37	NEUTRAL		PB1210-SS 9.6
5.4L V-8 MODULAR MUSTANG, FALCON BA SERPENTINE BELT	7.05*	2.32	1.83	NEUTRAL	PB1116-ST 9.03	
<b>GENERAL MOTORS 3.6L V6</b>						
3.6L HIGH FEATURE OHC V-6 LY7, LLT 20% UNDERDRIVE	6.77	2.36		NEUTRAL		PBU1177-SS20 6.84
<b>GENERAL MOTORS 3800 V-6</b>						
3.8L V-6 SERIES 1&2 SUIT NORMALLY ASPIRATED & 8 RIB SUPERCHARGER CONVERSION	7.28	3.45	2.26	C/W HUB	PB1083-ST 10.38	
3.8L V-6 L SERIES 3 SUIT NORMALLY ASPIRATED & 8 RIB SUPERCHARGER CONVERSION	7.28	3.45	2.26	C/W HUB	PB1207-ST 10.38	
<b>PONTIAC</b>						
287 TO 455 CID V-8	6.79	3.24	1.26	NEUTRAL	PB1056-ST 6.8	PB1056-SS 10.4
GTO 5.7L LS1, 6.0L LS2 V-8 SERP BELT	7.5	2.25	1.37	NEUTRAL		PB1480-SS 11.2
GTO 5.7L LS1, 6.0L LS2 10% UNDERDRIVE	6.75	2.25	1.37	NEUTRAL		PBU1480-SS10 9.9
GTO 5.7L LS1, 6.0L LS2 25% UNDERDRIVE	6.22	2.13	1.37	NEUTRAL		PBU1480-SS25 9.9
G8 L98 6.0L, LS3 6.2L V-8 SERP BELT	7.5	2.83	2.42	NEUTRAL		PB1117-SS 8.55
G8 L98 6.0L, LS3 6.2L V-8 SERP BELT 10% UNDERDRIVE	6.75	2.83	2.42	NEUTRAL		PBU1117-SS10 7.61

## 4340 STEEL HARMONIC BALANCER BOLTS

Our top quality crankshaft snout bolts positively secure harmonic balancers and make turning the crankshaft for valve adjustments quicker and easier.

- 1" hex head
- 4340 billet steel construction
- Integral washer
- Rolled threads
- Black oxide finish

PART #	APPLICATION	LENGTH *
06-1200	CHEVROLET SMALL BLOCK 7/16" NF THREADS	1 7/8"
06-1201	CHEVROLET BIG BLOCK 1/2" NF THREADS	1 5/16"

\* LENGTH MEASURED FROM BOTTOM OF WASHER TO END OF BOLT.

